

# OBD

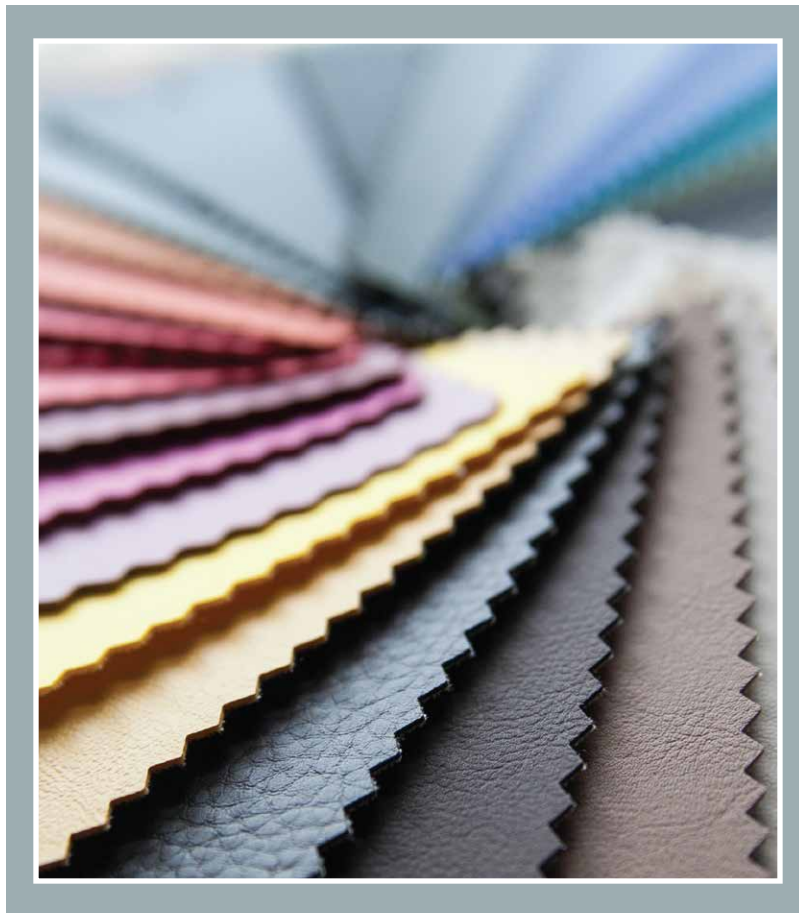
Biscayne Designs

---

## FABRIC & LEATHER

---

SELECTIONS



Easy Care. Fabric. Leather. Sunbrella.

| [WWW.OLDBISCAYNEDESIGNS.COM](http://WWW.OLDBISCAYNEDESIGNS.COM) |

# OLD BISCAYNE DESIGNS

## Recycled Leathers

---



*Rushmore RAVEN*



*Cantina COCOA*



*Cantina BLACK*



*Cantina SADDLE*



*Gunslinger COFFEE*



*Gunslinger SADDLE*

---

**CLEANABILITY** Cleanable with soap and water; do not use alcohol-based cleaning agents.

# OLD BISCAYNE DESIGNS

## Recycled Leathers

---



*Cantina* **MAGNETITE**



*Cantina* **PEANUT**



*Cantina* **QUARRY**



*Cantina* **TAUPE**



*Cantina* **MOLASSES**



*Cantina* **DOVE**



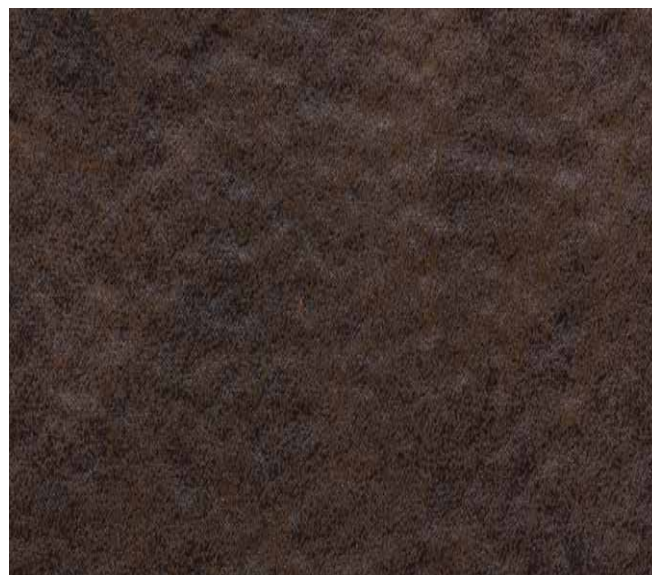
*Cantina* **PUTTY**

---

**CLEANABILITY** Cleanable with soap and water; do not use alcohol-based cleaning agents.



*Palance* SILT



*Palance* SABLE



*Palance* STEEL



*Palance* PUEBLO

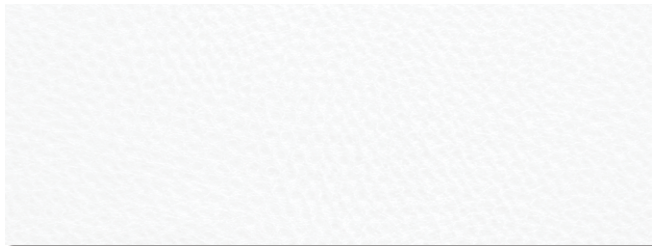
---

CLEANABILITY Water-based cleaners may be used.

# OLD BISCAYNE DESIGNS

Easy Maintenance

---



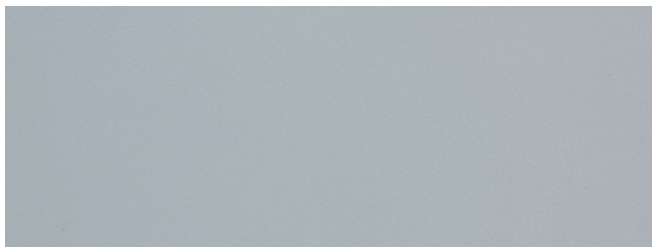
DILLON SNOW

WS | BC



YOSEMITE PARCHMENT

WS | BC



DILLON STEEL

WS | BC



RUSHMORE GREY

WS | BC



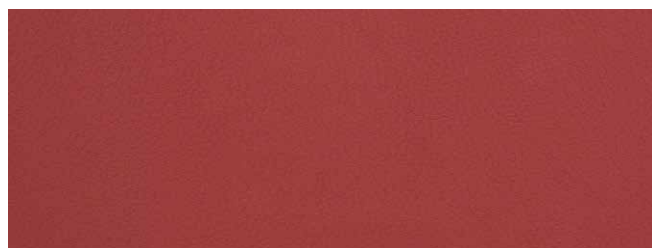
RUSHMORE SADDLE

WS | BC



YOSEMITE EARTH

WS | BC



DILLON LIPSTICK

WS | BC



DILLON THUNDER

WS | BC

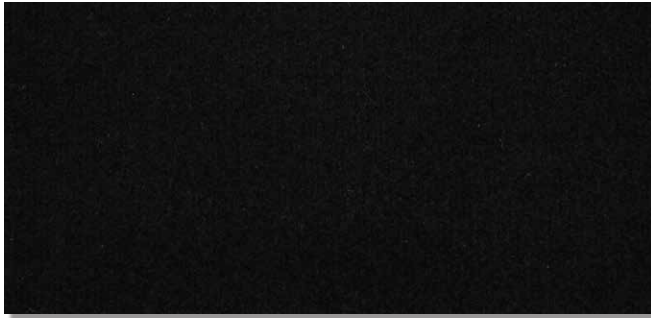
---

**CLEANABILITY** **ws** - Both water and solvent based solutions. **bc** - Bleach cleanable - 5:1 water/bleach solution.

# OLD BISCAYNE DESIGNS

## Performance Fabrics

---



*Dorset* **BLACK**



*Archetype* **SMOKE**



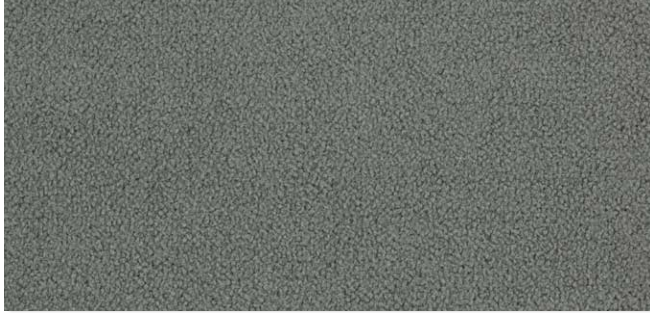
*High Cotton* **PEACOCK**



*Archetype* **CAFE**



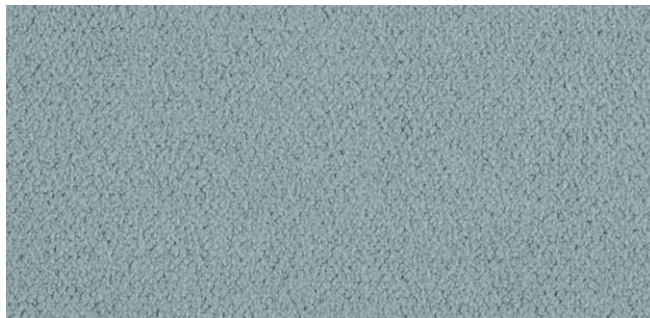
*Dorset* **CHARCOAL**



*High Cotton* **STEEL**



*Dorset* **ASH**



*High Cotton* **JADE**

---

**CLEANABILITY** Water-based cleaners may be used.

# OLD BISCAYNE DESIGNS

## Performance Fabrics



*Dorset TAUPE*



*High Cotton KHAKI*



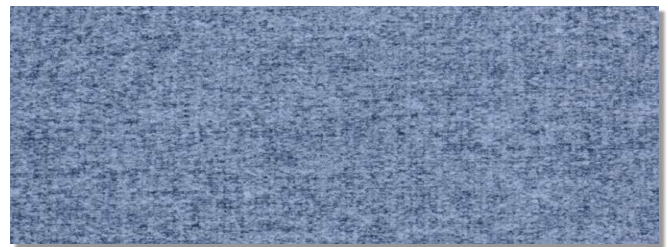
*Archetype HEMP*



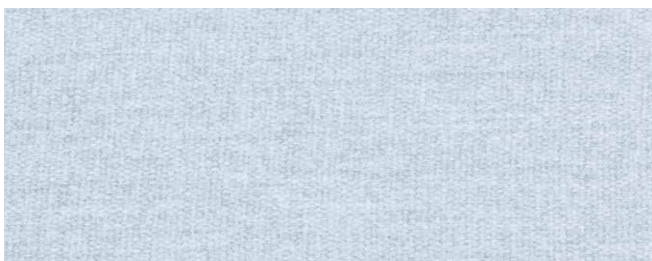
*Archetype BOURBON*



*Archetype ANCHOR*



*Dorset DENIM*



*Dorset SILVER GREY*



*High Cotton HAZE*



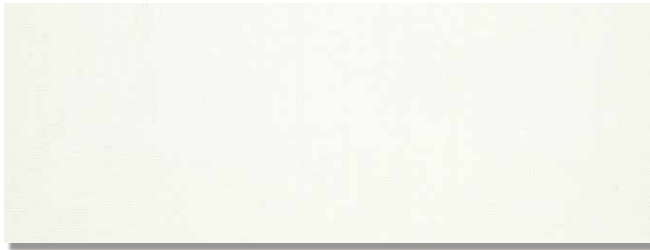
*Archetype QUARTZ*



*Archetype SILT*

**CLEANABILITY** Water-based cleaners may be used.

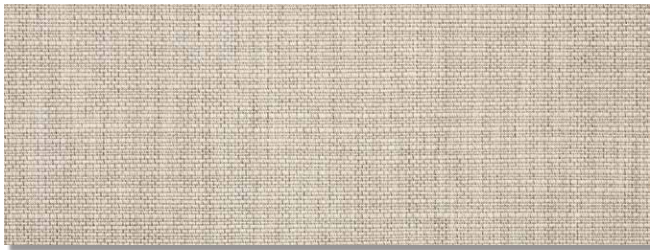
# OLD BISCAYNE DESIGNS



CANVAS WHITE



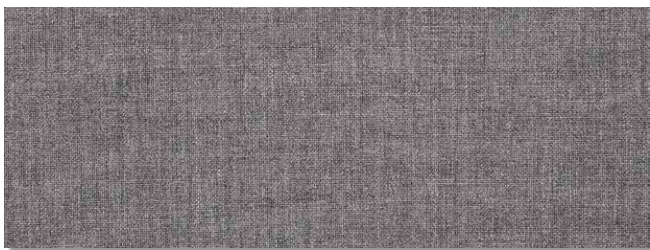
ACTION LINEN



ECHO ASH



ECHO DUNE



CAST SLATE



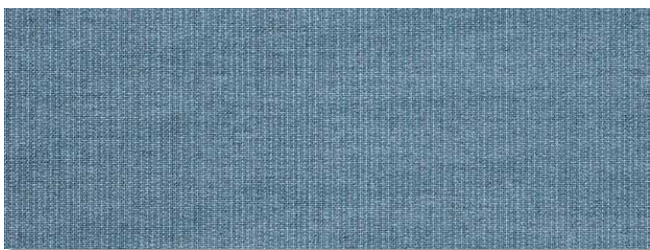
ACTION STONE



BLEND MIST



CAST SHALE



SPECTRUM DENIM



CAST LAGOON

**CLEANABILITY** Water-based cleaners may be used.





SAILCLOTH SPACE



CAST TEAK



HYBRID SMOKE



CANVAS ANTIQUE BEIGE



CAST ASH



CANVAS GRANITE



MEANDER LILAC

**CLEANABILITY** Water-based cleaners may be used.

## Padded Leathers

### Culp Palance

**CONTENT**

79% Polyester;  
21% Polyurethane

**WIDTH** 54"

**ABRASION**

15,000 double rubs

**PASSES**

California Tech Bulletin #117 Section E

UFAC

NFPA 260

**CLEANABILITY**

Water-based cleaners may be used.

## Recycled Leathers

### embrace™

A Marriage of Nature and Technology

Uses excess leather headed to already overcrowded landfills and recycles it into a stylish and timeless product.

**FIBER CONTENT**

**CANTINA** face: 100% polyurethane; backing: 43% recycled leather, 40% polyester; 17% cotton

**GUNSLINGER** face: 88% polyester; 12% polyurethane; backing: 58% recycled leather; 42% polyester

**OREGON TRAIL** face: 100% polyurethane; backing: 53% polyester; 42% recycled leather; 5% cotton

**PVC FREE**

**HIGHLY DURABLE** ASTM D 4157 exceeds 100,000 double rubs

**FLAMMABILITY** UFAC class 1; CAL 117 sec. E pass; NFPA 260 class 1

**CLEANABILITY** Cleanable with soap and water; do not use alcohol-based cleaning agents.

## Performance Fabrics

### Culp Archetype

**CONTENT** 79% Polyester, 21% Rayon

**FINISH** Teflon **WIDTH** 54"

**ABRASION** Heavy Duty - Exceeds 70,000 cycles

**PASSES** California Tech Bulletin #117-2013

UFAC Class 1

NFPA 260 Class 1

**CLEANABILITY** Water-based cleaners may be used.

### Culp High Cotton TFL

**CONTENT** 100% Polyester

**FINISH** Teflon **WIDTH** 54"

**ABRASION** Heavy Duty - Exceeds 100,000 cycles

**PASSES** California Tech Bulletin #117

Section E (CS-191-53) UFAC Class 1

**CLEANABILITY** Water-based cleaners may be used.

### Culp Dorset

**CONTENT** 100% Polyester

**FINISH** i-Clean **WIDTH** 54"

**ABRASION** Heavy Duty - Exceeds 55,000 cycles

**PASSES** California Tech Bulletin #117-2013

UFAC Class 1

NFPA 260 Class 1

**CLEANABILITY** Water-based cleaners may be used.

### Culp Venue TFL

**CONTENT** 100% Polyester

**FINISH** Teflon **WIDTH** 54"

**ABRASION** 80,000 cycles

**PASSES** California Tech Bulletin #117 Section E

UFAC

NFPA 260

**CLEANABILITY** Water-based cleaners may be used.

## HEAVY-DUTY ANTIMICROBIAL POLYURETHANES

### Easy Maintenance Fabrics

#### Culp Dillon

**CONTENT** 100% Polyurethane      **WIDTH** 54"  
**FINISH** Antimicrobial Silver Based Ion Technology  
**ABRASION** Heavy Duty - Exceeds 200,000 cycles  
**PASSES** California Tech Bulletin #117-2013;  
UFAC Class 1; NFPA 260 Class 1; MVSS 302 Pass  
**CLEANABILITY**  
WS - Both water and solvent based solutions.  
Bleach cleanable - 5:1 water/bleach solution.

#### Culp Rushmore

**CONTENT** 100% Polyurethane      **WIDTH** 54"  
**FINISH** Antimicrobial; iclean  
**ABRASION** Heavy Duty - Exceeds 200,000 cycles  
**PASSES** California Tech Bulletin #117-2013; UFAC Class  
1; NFPA 260 Class 1  
**CLEANABILITY**  
WS - Both water and solvent based solutions.  
Bleach cleanable - 5:1 water/bleach solution.

#### Culp Suave

**CONTENT** 100% Polyurethane      **WIDTH** 54"  
**FINISH** Antimicrobial  
**ABRASION** Heavy Duty - Exceeds 450,000 cycles  
**PASSES** California Tech Bulletin #117 Section E  
(CS-191-53); UFAC Class 1; NFPA 260 Class 1;  
MVSS 302 Pass  
**CLEANABILITY**  
WS - Both water and solvent based solutions.

#### Culp Yosemite

**CONTENT** 100% Polyurethane      **WIDTH** 54"  
**FINISH** Antimicrobial  
**ABRASION** Heavy Duty - Exceeds 100,000 cycles  
**PASSES** California Tech Bulletin #117-2013;  
UFAC Class 1; NFPA 260 Class 1; MVSS 302 Pass  
**CLEANABILITY**  
WS - Both water and solvent based solutions.  
Bleach cleanable - 5:1 water/bleach solution.

# OLD BISCAYNE DESIGNS

---



Blend	97% Sunbrella Acrylic 3% Other Fiber Selvedge: Left/Right	Space	100% Sunbrella Acrylic Selvedge: Left/Right
Boss	100% Sunbrella Acrylic Selvedge: Left/Right	Tailored	100% Sunbrella Acrylic Selvedge: Top/Bottom
Canvas	100% Sunbrella Acrylic Selvedge: Left/Right	Heritage	50% Sunbrella Acrylic 50% Recycled Sunbrella Acrylic Selvedge: Left/Right
Cast	100% Sunbrella Acrylic Selvedge: Left/Right	Hybrid	98.6% Sunbrella Acrylic 1.4% Polyester Selvedge: Left/Right
Action	100% Sunbrella Acrylic Selvedge: Left/Right	Pashmina	98% Sunbrella Acrylic 2% Other Fabric Selvedge: Left/Right
Echo	100% Sunbrella Acrylic Selvedge: Left/Right		
Meador	100% Sunbrella Acrylic Selvedge: Left/Right		
Spectrum	100% Sunbrella Acrylic Selvedge: Left/Right		

WIDTH  
54"/137cm width

CLEANABILITY  
Water-based cleaners may be used.

SURFACE TREATMENT  
Sunbrella fabrics are treated with a proprietary water and stain repellent finish that is designed to last for several years, but may require replenishings after a thorough cleaning. Glen Raven® recommends 303® Fabric Guard™, available in the United States, and Tex/Aktiv, available internationally.

DISCLAIMER  
Some Old Biscayne product(s) may be manufactured using Sunbrella fabrics. Old Biscayne's designs are not licensed by Sunbrella or Glen Raven, Inc.

COPYRIGHT  
Sunbrella® image(s) provided by Glen Raven, Inc., owner of Sunbrella registered trademark.



# OB

---

Biscayne Designs

**1.800.397.5397**

123 INDUSTRIAL BOULEVARD • AMERICUS, GEORGIA 31719

| [WWW.OLDBISCAYNEDESIGNS.COM](http://WWW.OLDBISCAYNEDESIGNS.COM) |