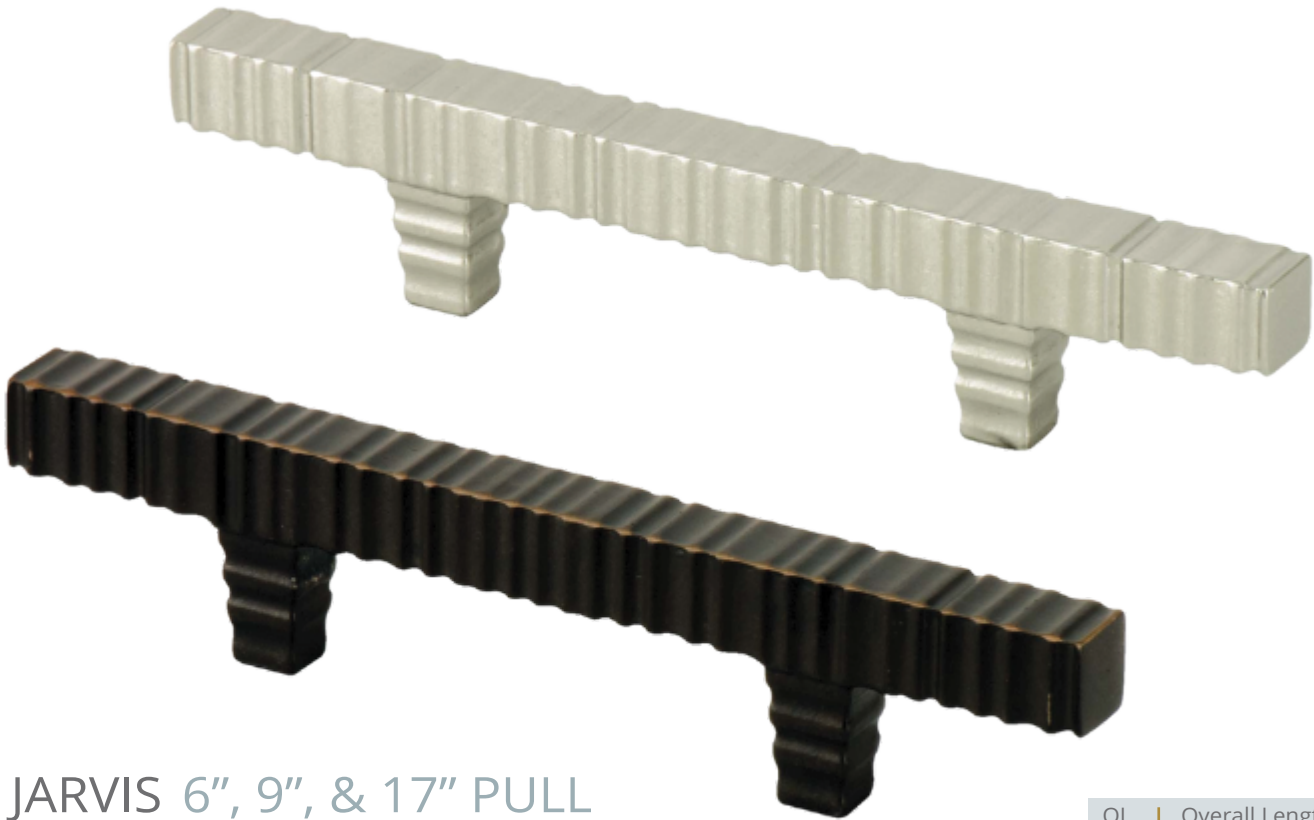


HARDWARE



JARVIS 6", 9", & 17" PULL

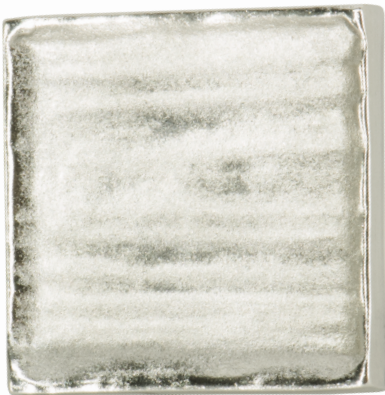
SATIN NICKEL & OIL RUBBED BRONZE

OL: 6" | OW: 1/2" | P: 1 1/8" | BS: 3/8" | CC: 3"

OL: 9" | OW: 5/8" | P: 1 3/4" | BS: 1/2" | CC: 6 1/4"

OL: 17" | OW: 5/8" | P: 1 3/4" | BS: 1/2" | CC: 14 1/2"

OL	Overall Length
OW	Overall Width
P	Projection
BS	Base Square
CC	Center to Center



MEGHAN 2" KNOB

SATIN NICKEL & OIL RUBBED BRONZE

OL: 2" | OW: 2" | P: 1" | BS: 1/2"

